

2024

Annual  
Impact  
Report

Helping making college more affordable for families affected by workplace injuries



Visit Us

[www.sfmfoundation.com](http://www.sfmfoundation.com)

Call Us

855 621 2076

Email Us

[info@sfmfoundation.com](mailto:info@sfmfoundation.com)

2024

## On a **mission**

As we look back at 2024, we are extremely grateful for the support of our generous donors in helping change the lives of the families we assist. We are thankful for this sense of community in our industry and beyond, pulling together financially to make scholarships possible for such deserving families.

Sixteen years after we began our mission to help make college affordable for students affected by work injuries, we've granted an incredible 247 scholarships totaling \$4.1 million. This includes \$482,000 awarded to 15 new recipients in 2024. Thanks to the unwavering support of event sponsors and donors, we've been able to reach these families in need for over a decade and a half.

Over 125 scholarship recipients have graduated since the SFM Foundation's inception in 2008, and we currently have 50 active scholarships.

In addition to awarding scholarship dollars, we provided student outreach through care packages, our annual video contest, and a network for recipients and their families.

We are so thankful for your continued generosity and for being part of the SFM Foundation family.

With sincere gratitude,

**Linda Williams**

*President, SFM Foundation*



### Jackson

"Your decision to extend my scholarship for the next two years toward my MBA is more than I could have hoped for, and I truly cannot thank you enough for this generosity. This will go a long way in helping me stay focused on my studies and move closer to achieving my long-term goals. It's reassuring to know that I have such incredible support behind me, and it motivates me to work even harder to make the most of this opportunity."



## HELP

With all the successes we celebrated in 2024, we continually aim to help more students and families affected by workplace tragedies each year. While inflation affects all of us, it has an even greater impact on scholarship recipients and their families. To increase funding as we support additional families each year, here are some ways you can help:

- Continue to contribute if you are a current sponsor or donor, and consider increasing your contribution
- Consider sponsoring an event if you haven't already, or help us recruit additional sponsors and donors
- Attend our fundraising events and invite others to join you
- Spread the word about our scholarship program and encourage students affected by workplace accidents to apply
- Share our social media messages to increase our visibility
- Include the SFM Foundation/Kids' Chance on your organization's philanthropy webpage, and consider making us your organization's charity of choice

## EVENTS

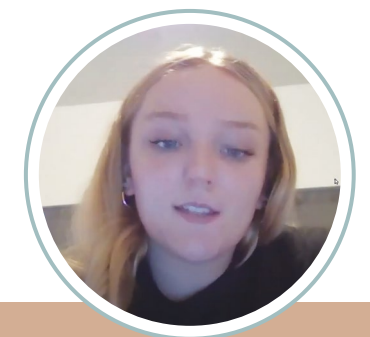
The SFM Foundation golf events are the primary source of fundraising for our scholarship fund, and 2024 was no exception. The Minnesota golf event has become one of the largest charity golf tournaments in the state. The Iowa golf outing is a newer event and continues to grow each year. Our 2024 golf events combined raised an astounding \$160,000 for our scholarship program.

Our fall events continue to add to our scholarship fund, as well. The annual Minnesota fall fundraiser combined with the 2024 Iowa bowling event raised nearly \$28,000 for scholarships.

Thank you to all who supported our 2024 fundraising events. We hope to see you at our 2025 events!

### Kadence

"My mom was involved in a workplace accident that caused her to be unable to work when I was sophomore in high school. I decided to attend community college and the SFM Foundation has backed me up in my decision. They have made the transfer from high school to college and from being a teenager to being an adult a lot easier. They have supported me throughout this very tough time and have made my parents' mind at ease knowing that there are people willing to help take care of me."



**\$4.1**  
Million dollars awarded

 **247**  
Scholarships awarded

*SFM Foundation scholarships are awarded regardless of which insurance company was involved in the workers' compensation claim. In fact, most scholarships have been awarded to the families of injured workers who are not insured by SFM. While SFM played a key role in the creation of the SFM Foundation and continues to be a valued sponsor of the organization, the program is designed to serve the entire community. Scholarship applicants are evaluated with no consideration for which insurance carrier was involved in the injury claim.*

# Thank **you**

We appreciate the generosity of our **SPONSORS** who are the main source of funding for the scholarships we offer. The SFM Foundation awards scholarships to a growing number of applicants each year. Without our supporters, many of these families wouldn't get the help they need. Thank you to our generous sponsors. Your support helps change lives.

The SFM Foundation is run entirely by SFM employees who **VOLUNTEER** their time to handle our day-to-day operations, provide outreach to scholarship recipients and their families, maintain our sponsor and donor relations, and plan and execute our fundraising events. They have passion for our cause and are the heart and soul of our organization. Without them, we would not be able to dedicate all of our proceeds to the students and families we serve, and we can't thank them enough for their time and talent.

## **Nathan**

"I wanted to express my gratitude for how generous you have been in giving me this scholarship and allowing me to pursue my dream career as a lineman. My time in college has been nothing short of amazing. Thank you for believing in me. I have found my dream career and cannot wait to start working in it."



## **SFM FOUNDATION LEADERSHIP**

**Linda Williams** President

**Lindsay Henningsgaard** Executive Director

**Debra Zorn** Scholarship Director

**Kim Burandt** Event Director

**Jayme McCormick** Assistant Event Director

## **BOARD OF DIRECTORS**

**Darrin Ausman** Director Athletico Physical Therapy

**Cali Benson** Director Marsh McLennan Agency

**Colton Cason** Director Iowa Orthopedic Center

**Nick Cooling** Director Mueller, Schmidt, Mulholland & Cooling

**Lisa Falck** Director Paradigm Outcomes

**Andy Gebhard** Board Chair SFM

**Shawn Miner** Director SFM

**Robert Otos** Director OMNI Case Management

**Alison Stewart** Director Peddicord Lillis

**Gary Uhl** Director Sedgwick

**Mikaela Willhite** Treasurer St. Cloud Hospital

**Linda Williams** President SFM

**Debra Zorn** Secretary SFM

**To learn more**

Visit us at [sfmtfoundation.com](http://sfmtfoundation.com)

fnd-240 0425